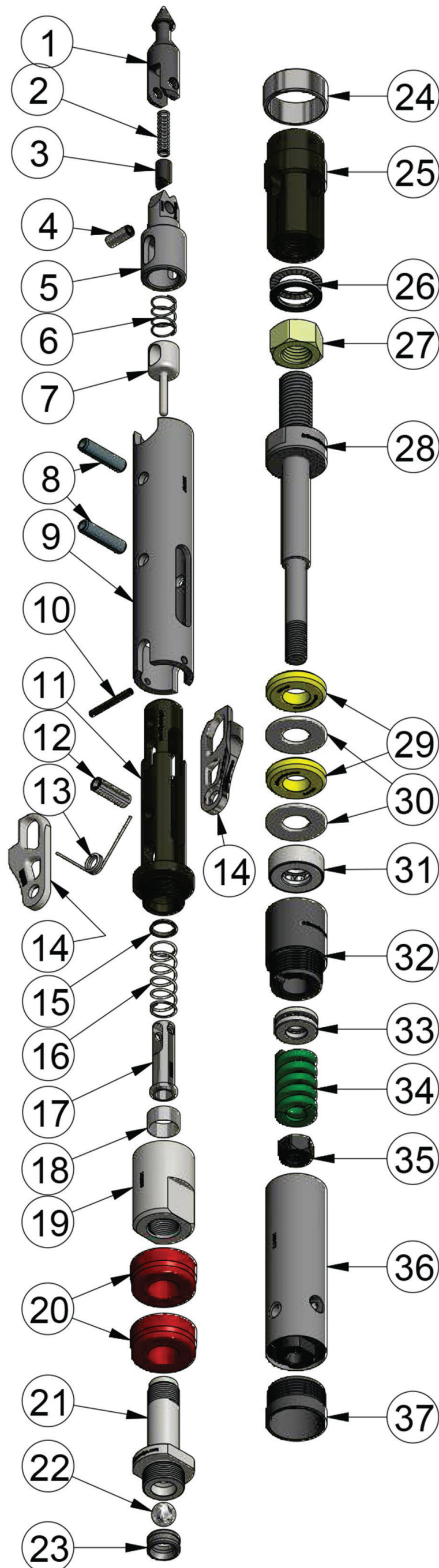


EDGE LATCH™ CORE BARREL HEAD ASSEMBLY – UNDERGROUND

HEAD ASSEMBLY – UNDERGROUND



Item	Description	BU		NU		N2U		HU	
		p/n	qty	p/n	qty	p/n	qty	p/n	qty
1-38	HEAD ASSEMBLY	100752	-	100791	-	100932	-	100811	-
1	Spearhead Point	100462	1	100462	1	100462	1	100462	1
2	Spearhead Spring	100447	1	100447	1	100447	1	100447	1
3	Detent Plunger	100463	1	100463	1	100463	1	100463	1
4	Spring Pin, ø7/16" x 1" Long	100448	1	100448	1	100448	1	100448	1
5	Spearhead Base	100712	1	100796	1	100796	1	102480	1
6	Latch Locking Spring	100747	1	100798	1	100798	1	100798	1
7	Latch Locking Pin	100746	1	100805	1	100805	1	102479	1
8	Latch Retracting Pin	100701	2	100449	2	100449	2	100483	2
9	Latch Retracting Case	100743	1	100797	1	100797	1	100815	1
10	Latch Retracting Case Pin	100744	1	100807	1	100807	1	101154	1
11	Latch Body, Upper	100745	1	100804	1	100804	1	101395	1
12	Latch Pivot Pin	100702	1	100451	1	100451	1	100484	1
13	Latch Spring	100722	1	100450	1	100450	1	100450	1
14	Latch	100715	2	100808	2	100808	2	102476	2
15	Spring Seat	100827	1	100827	1	100827	1	-	-
16	Latch Retracting Case Spring	100801	1	100801	1	100801	1	102474	1
17	Spring Sleeve	100826	1	100826	1	100826	1	102475	1
18	Spring Cavity Bushing	100828	1	100828	1	100828	1	-	-
19	Latch Body Adaptor	100749	1	100809	1	100809	1	100821	1
20	Pump-In Seal	100750	2	100764	2	100764	2	100765	2
21	Latch Body Seal Seat	100751	1	100810	1	100810	1	100822	1
22	Stainless Steel Ball	100452	1	100452	1	100452	1	100452	1
23	Landing Indicator Bushing, OD Groove	100468	1	100468	1	100468	1	100468	1
24	Landing Shoulder	100716	1	100469	1	100553	1	100497	1
25	Latch Body, Lower	100717	1	100470	1	100470	1	100498	1
26	Nord-Lock Washer	100703	1	100453	1	100453	1	100485	1
27	Lock Nut	100704	1	100454	1	100454	1	100486	1
28	Spindle	100718	1	100471	1	100471	1	100499	1
29	Shut-Off Valve, Hard	100705	2	100455	2	100455	2	100487	2
30	Shut-Off Washer	100706	2	100456	2	100456	2	100488	2
31	Spindle Bearing, Upper	100707	2	100457	1	100457	1	100489	1
32	Spindle Bushing	100719	1	100472	1	100472	1	100500	1
33	Spindle Bearing, Lower	-	-	100458	1	100458	1	100457	1
34	Compression Spring	100709	1	100459	1	100459	1	100491	1
35	Self-Locking Hex Nut	100711	1	100460	1	100460	1	100492	1
36	Inner Tube Cap Assembly, No Thd. Protector	100721	1	100475	1	100475	1	100502	1
37	Thread Protector, Inner Tube Cap	100639	1	100602	1	-	-	100603	1