

LIGHT WEIGHT WIRELINE DRILL ROD - "LITE"

When drill size and/or remote site mobilization becomes an issue, Drillers Edge offers a lighter weight drill rod alternative in deep hole (D), reverse flank (R), and standard wireline (WL) thread forms.

THE DRILLERS EDGE DIFFERENCE

Reduces Weight, Drills Deeper, Lasts Longer

A variable wall thickness ensures a strong joint while decreasing the overall weight of the drill rod without compromising life.

- Weight reduction: N = 12% | H = 22% | P = 23%
- Allows for deep holes with smaller, lower powered drill
- Mobilization to site easier and less expensive (fly jobs)
- Ideal for demanding projects requiring hole deviation

Quality Materials & Workmanship

Each stage of the process, from material selection to manufacturing, packaging and handling, is controlled and supported by an experienced team — you can be confident that every rod that leaves our factory will perform to your expectations.

- High quality alloy steel tubing with same mechanical properties as parallel wall
- Thinner mid body for increased flexibility
- Treated to reduce bent rods
- Through-hardened box and pin ends maximize joint strength and increase rod life



Precision Machined Threads

Drillers Edge joints are designed to be more secure. After a final quench and temper heat treatment, threads are precision machined. After machining, WL and D threads are through-hardened (R threads are mechanically hardened) for more consistent wear resistance, significantly less galling of both the pin and box threads, and less chance of the joint pulling apart.

- Available in standard wireline (WL), deep hole (D), and reverse flank (R) thread forms
- Complete line of accessory products are manufactured to the same precision

Size and Thread	Depth Capacity*		Pullback** (rated maximum)	
	m	ft	kN	lbf
NWL LITE	2500	8,000	222	50,000
HWL LITE	1750	6,000	445	100,000
ND LITE	3500	11,500	334	75,000
HD LITE	3000	10,000	512	115,000
PD LITE	1850	6,000	TBA	TBA
NR LITE	>3500	>11,500	378	85,000
HR LITE	>3000	>10,000	556	125,000

*Depth capacity ratings are based on published industry values. Di-Corp uses comparable materials and manufacturing processes, and is confident the same results will be achieved. It is important to note that the care and handling, in addition to drilling conditions, practices, and equipment will play a significant role in the ultimate depth capacity and performance of any drill rod.

** Di-Corp is testing its rod offering at an independent facility and will publish values as they become available. Pullback is rated on a new, unused drill rod.

LIGHT WEIGHT WIRELINE DRILL ROD



THREAD COMPOUND REDUCES FRICTION & GALLING ON MAKEUP

Di-Corp uses an environmentally friendly thread compound to reduce friction. This allows for the proper makeup of the joint with less torque and reduced galling.

- Every rod is factory coated with this compound on the box and pin ends
- The use of this compound is MANDATORY for the initial make-up of the joint

IDENTIFICATION

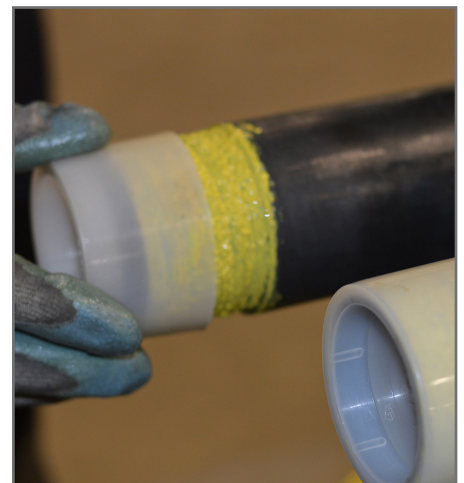
- Pin ends are stamped with a code for easy traceability
- Colour-coded identification decals on the end and side of the bundle end caps make it easy to find the type of LITE rod you need.

Decal Color	Represents
Orange	LITE Drill Rod
Grey	W / WT Casing
White	Indicates Imperial Length (5', 10', etc.)
Yellow	WL Thread
Green	D Thread
Blue	R Thread



PACKAGING

- All rods are packaged and sold in bundles
- The entire length of the rod is coated with Krown rust protection oil
- Box and pin ends are protected with plastic end caps to ensure the anti-galling thread compound does not get contaminated or removed before first use
- Hexagonal bundle end caps further protect the rod ends during shipping and make them easier to stack



 **Canada's #1 Rust Protection Company.**

WARNING: All threads are precision machined and mixing Di-Corp rods with other manufacturers' rods, adaptors, or threaded accessories is not recommended. Failure to adhere to this recommendation may cause premature failure, an inspection may result in the warranty becoming void.